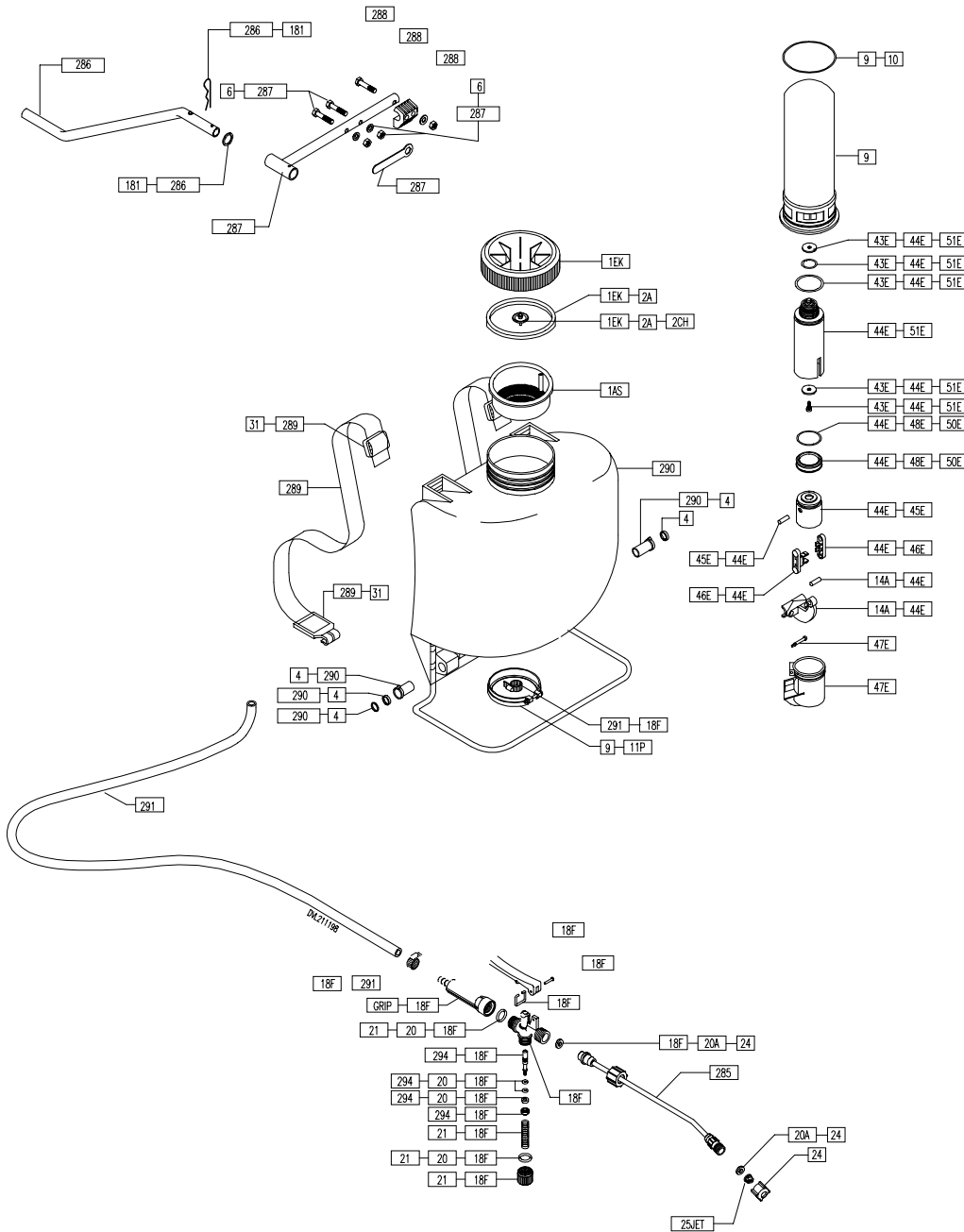


# Parts List for the Farm & Home 528 Piston Sprayer



## PARTS LIST

- Kit 1AS Tank strainer.
- Kit 1EK Cap.
- Kit 2A Seal for cap 6".
- Kit 2CH Check valve for cap.
- Kit 4 Nylon bearing.
- Kit 6 Screw and nut set.
- Kit 9 Pressure tank.
- Kit 10 Pressure tank "O"ring.
- Kit 11P Retention clamp plastic.
- Kit 14A Aluminum crank & brass pin.
- Kit 18F Sray pistol complete.
- Kit 20 Spindle "O"ring and washer.
- Kit 20A Washers.
- Kit 21 Plug set.
- Kit 24 Nozzle holder.
- Kit 25JET Plastic jet spray nozzles.
- Kit 31 Belt hooks.
- Kit 43E Piston "O"ring & washer set.
- Kit 44E Complete piston & cylinder.
- Kit 45E Piston with brass pin.
- Kit 46E Connecting rod assy.
- Kit 47E Piston protector.
- Kit 48E Piston cup - Viton.
- Kit 50E Piston cup - Nitril.
- Kit 51E Cylinder assy.
- Kit 181 Locking pin (large) & washer for pump handle.
- Kit 285 16" brass spray wand.
- Kit 286 Z shaped pump handle black paint.
- Kit 287 Pump lever black paint
- Kit 288 Retaining clip-nuts and bolts.
- Kit 289 Polyester shoulder straps (2).
- Kit 290 Tank for survivor-black base & bushing.
- Kit 291 PVC hose-black with (2) hose clamps.
- Kit 294 Plastic spindle complete.
- Kit GRIP Grip for spray pistol.

For your convenience, you may order any and all spare parts from our parts depot:

SP Parts and Services, Inc.  
(800) 286-0679

### NOTE:

For best results, the sprayer should be pumped every 5 seconds on a continuous basis. This will maintain your spraying pressure. If you do not pump, you will not have pressure to spray



PO Box 7098, Santa Monica, CA 90406  
(310) 449-1492 (800) 457-3440 FAX (310) 449-6912

If you have a question or a problem please call us at

**1-800-457-3440**

We will answer any question you may have.