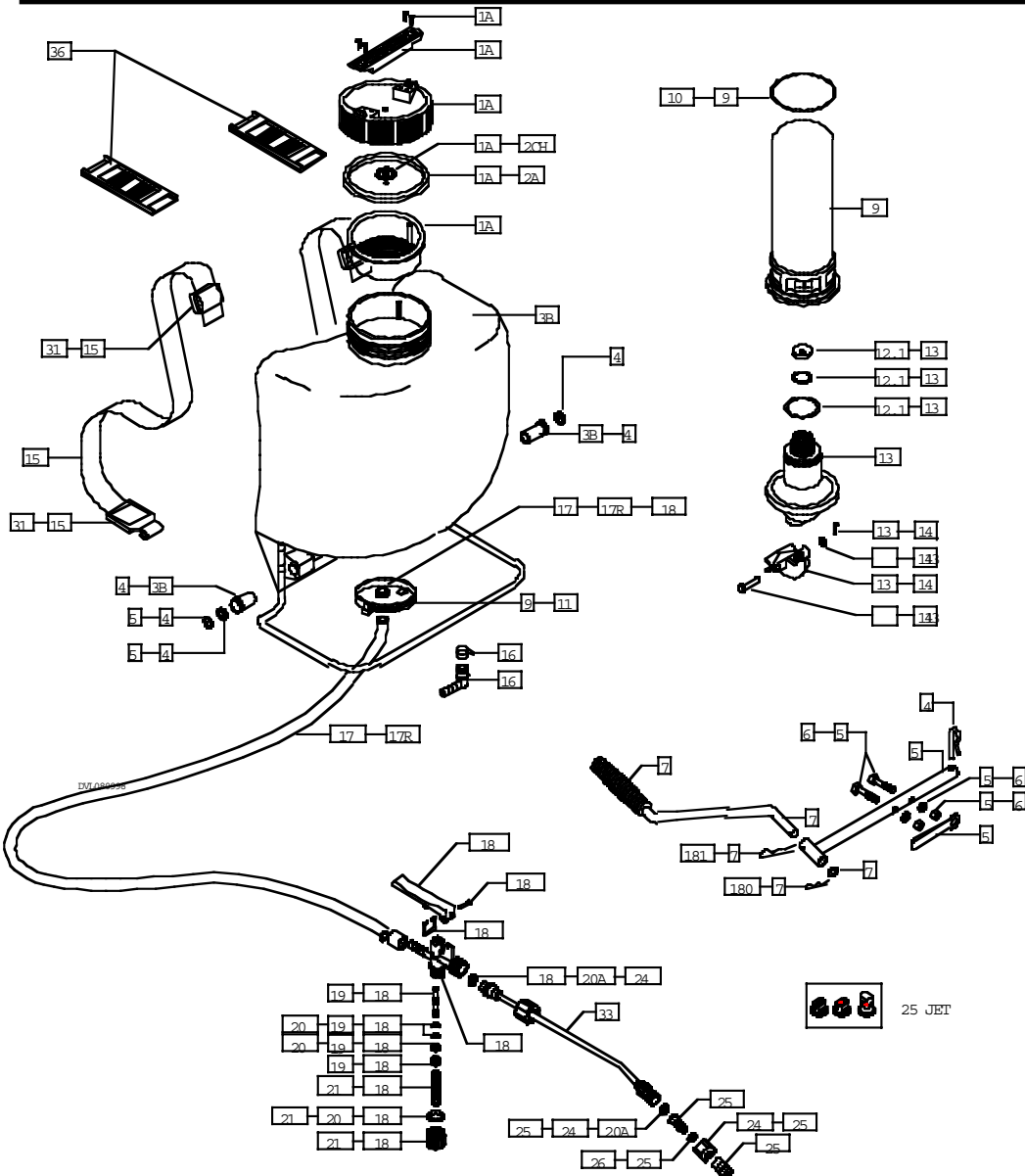


Parts List for the SP1-E Backpack Sprayer



PARTS LIST

Kit 1A	6 In. cap & seal w/check valve and handle.
Kit 2A	Viton seal for 6 In. caps.
Kit 2CH	Check valve for SP SYSTEMS cap.
Kit 3B	Tank w/reset strap attachments-6 In. mouth.
Kit 4	Nylon bearing.
Kit 5	Pump lever (fold-back type).
Kit 6	Screw and nut set.
Kit 7	Pump handle (fold-back type).
Kit 9	Pressure tank.
Kit 10	Pressure tank "O"ring in nitril.
Kit 11	Stainless retention clamp for pressure tank.
Kit 12.1	Diaphragm "O"ring & washer set.
Kit 13	Diaphragm pump module high pressure.
Kit 14	Crank.
Kit 15	Belts and clips.
Kit 16	90 degree rubber connecting elbow w/brass.
Kit 17	47 In. hose -600 PSI.
+ Kit 17R	47 In. rubber hose -600 PSI.
Kit 18	Spray pistol w/brass spindle.
Kit 19	Brass spindle set w/O rings and washers.
Kit 20	Spindle "O"ring set.
Kit 20A	Washer.
Kit 21	Plug set-cap, spring & O ring.
Kit 24	Spray nozzle holder.
Kit 25	Adjustable brass spray tip with holder.
+ Kit 25JET	Plastic spray tip set (2-8004 & 1-TK5)
Kit 26	O ring set.
Kit 31	Plastic belt hooks.
Kit 33	Aluminum spray wand
Kit 36	Shoulderpads.
Kit 180	Locking pin-pump & washer for pump handle (small).
Kit 181	Locking pin-pump & washer for pump handle (large).

SP1-E

For your convenience, you may order any and all spare parts from our parts depot:

SP Parts and Services, Inc.
(800) 286-0679

THIS PUMPING MODULE IS PROTECTED UNDER THE FOLLOWING PATENTS

U.S.A.	4,702,419
U.S.A.	4,690,331
KOREA	46991
JAPAN	1791401
MEXICO	157782
U.K.	2159381
SPAIN	542423
SPAIN	542424
CANADA	1291730
CANADA	1291970
OTHERS	PENDING

NOTE:

For best results, the sprayer should be pumped every 5 seconds on a continuous basis. This will maintain your spraying pressure. If you do not pump, you will not have pressure to spray

If you have a question or a problem please call us at

1-800-457-3440

We will answer any question you may have.

SP Systems

PO Box 7098, Santa Monica, CA 90406
(310) 449-1492 (800) 457-3440 FAX (310) 449-6912